

March 2010

2 Bridge Street, PO Box 1263, Nelson  
Ph: 539 4848  
nelson@englishlanguage.org.nz  
Office Hours: 8am – 3.30pm Mon – Thurs

21 Henry Street, Blenheim  
Ph: 579 2460  
esol@marlboroughonline.co.nz  
9am – 5pm Wed  
9am – 2pm Thurs

Please tell your learner of the events and news in this newsletter that would interest him/her.



### View from the Chair

The celebration of Race Unity Day at Victory Square on March 21 brought together many of the different cultures which make up the Nelson community. How appropriate to celebrate this event in the neighbourhood which has just been named New Zealand's Community of the Year.

Thank you to the many people who registered at our ELP table as potential tutors. Our committee is very grateful for this offer to help fulfil our goals and provide the assistance which enables new refugees and migrants attain proficiency in English.

This year has brought certain financial challenges for our staff and committee. Thankfully we have an energetic and committed group of people intent on providing a high standard of English tuition.

We are looking forward to producing a recipe book from the many cultures represented amongst our learners. We hope this will not only bring us a modest financial return but will help to advertise our work. Our committee looks forward to your support in the production and sale of this booklet.

Our Annual General Meeting is to be held on Tuesday 20<sup>th</sup> April 2010 and I invite you all to attend. The guest speaker will be Merle Moffitt talking about her visit to the Ban Mae Toh school in northern Thailand. This is the school which featured in the film shown last September at the Suter Cinema.

In conclusion I wish to thank you all. Volunteers are vital to the success of English Language Partners.

Kind Regards,  
Brian Wilke, Chair

## Annual General Meeting

The AGM of English Language  
Partners  
Nelson-Marlborough  
will be held on

**Tuesday 20 April**  
**at 7.30pm**  
**at the Hearing Association**  
**rooms at**  
**354 Trafalgar Square, Nelson**

Guest speaker:- Merle Moffitt  
Merle is one of our tutors and will be  
telling us about her recent visit to  
the Ban Mae Toh school in Thailand.



## Our Literacy Class

We have had a Literacy Class running in Nelson for 6 years now. This has been specifically funded by our National Association to meet the needs of former refugees who have little or no education in their first language. Up until this year it has included mostly Khmer Krom women and we have also provided transport and assistance with childcare.

Near the end of last year, it became clear that some of the newly arriving refugees had far greater literacy needs than the people already in the class and the opportunities for these new people to learn the English they need in Nelson were becoming more limited with funding cuts for ESOL classes at NMIT and Victory School. We decided that we had to prioritise these new needs, so had to tell the 'old hands' in the class that we could no longer provide this service for them.

The class started in February with all the learners being former refugees who arrived in Nelson within the last 12 months. We now have 14 people in the class – seven Kayan, four Bhutanese and three Chin people. We no longer provide transport or childcare, but have a tutor (Kathy McDonald) and two Assistant Tutors (Betty Sammes and Eileen Ciminiello). The class is going very well so far with a very high rate of attendance – everybody is very keen to learn.

However, due to our National Association having increased demand for Literacy Class funds that have not increased at all, even for inflation, over the last few years, we are funded for about \$6,100 for the class this year, instead of the \$22,000 that we have had over the previous few years. The need is expanding, but the funds are shrinking!



## English for Employees Classes

We are running our E4E classes again this year. These are classes for learners who are (a) permanent residents and (b) working, and aim to help people with the language, numeracy and culture they need for the NZ workplace. The classes are for 2 hours, once a week and are in modules of 25 hours. Last year we had over 40 people join these classes and most found them very useful and practical. If your learner or a friend or family member fits these criteria and is keen to learn more English, please get them to contact Doug. At present we have classes running at 4pm and 6.30pm every Monday, but will look at starting other classes if there is demand.

## Tutor Training

### New tutors

We have just finished the first tutor training course for 2010. We now have 14 fine and keen tutors eagerly awaiting their first 'matching'. The photo shows, from left, (seated) Margie Norris-Brown, Sally Wilkens, Barb Irwin, Judy Hiener, Nicky Barker and (standing) Wendy Joyes, Richard Norriss-Brown, Cathrine Brougham, Sue Heydon, David Bertram, Mark Leach, Carolyn Moore, Vivien Davies and Leigh Ramsay.



The next tutor training courses for 2010 will start on:

- **11 June**
- **3 September**

If you know of anyone who you think might like to train as a home tutor, please ask them to contact Doug.

## Food for friends...?



Jill Harris, one of our dedicated committee members, has come up with what I think is a great idea. We are looking to publish a recipe book containing recipes from our learner communities. The idea is to intersperse recipes with short notes from the learners –

the significance of a particular dish, when it is used etc.

Jill is already a successful cookbook editor! She edited and designed *The Great Little Cookbook* for the Ministry of Social Development. This book has now sold 48,000 copies and is being translated into Chinese – and we have a number of copies in our Resources Library.

To successfully put together this recipe book, we need your help. Perhaps you could ask your learner if they have any recipes that they would like to share and say a few words about. Cooking is a great source of language practice, so here is a chance to use some of that language for a practical purpose. If you think you and your learner could help us with this, please contact Doug at the office.

The other thing we need is a name for the book, so all creative, colourful, catchy suggestions will be gratefully received. This could be a great project with benefits all round, so here is your (and in particular your learner's) chance to be part of it!

## Our AGM

As you will see on the front of this newsletter, we are holding our Annual General Meeting on the evening of Tuesday 20<sup>th</sup> April at Hearing Association House at 354 Trafalgar Square (on the west side of the cathedral not far from the Rutherford Hotel) at 7.30pm.

A highlight of this event will be a talk by home tutor Merle Moffitt, who has recently returned from travelling in Thailand, including a visit to Ban Mae Toh School, that featured in the film, *Innocence*, we showed at the Suter last year and for which we raised about \$1,500. I'm looking forward to hearing Merle's impressions of the school and how they are going now.



As part of the AGM, we will be officially changing our name from ESOL Home Tutors (Nelson) Inc to English Language Partners Nelson-Marlborough Inc.

## Learners in Listener

How many of you saw the article in the *Listener* of 20 – 26 February about the Kayan people in Nelson? This was something that we set up through Grace Bassett, our Profile and Publications Coordinator at National Office. It was written by Rebecca MacFie with some wonderful photographs by Tim Cuff and I think gave an excellent background to some of the problems that the Kayan people have faced and the importance of their getting sufficient English language support. There were some good quotes from Claire Szabo, our Chief Executive, so hopefully this will promote discussion amongst influential people.

One immediate benefit from the article was a phone call from two women in Auckland who had seen the article and wanted to do something to help us help the Kayan people learn English. They have subsequently sent us \$1,000 to help towards the cost of our Literacy Class – isn't that wonderful?

# SOCIAL ENGLISH GROUPS



There are two groups running again this year.

**Nelson: Tuesday afternoons**  
**1.30 - 3pm**  
Home Tutor office  
2 Bridge Street

**Richmond: Tuesday evenings**  
**7.00 - 8.30pm**  
23A Salisbury Rd  
Richmond

Tutor for both groups:  
Lyn Ashby

The groups provide a fun, sociable learning opportunity. Please encourage your learner to attend if they would like extra conversation practice.

## Social English group on the farm



*Lyn Ashby's Tuesday afternoon Social English Group had a lovely end-of-year outing to the farm of Rolf and Roswitha Kempe, in the Collins Valley near the Rai Saddle, where we enjoyed their wonderful hospitality in the sunshine.*

## Bhutan

As I'm sure you are all aware, over the last 12 months or so, Nelson has started playing host to refugees from Bhutan. In our efforts to find information about Bhutan, we have come across what might be a useful book. It is called *Bhutan: A Visual Odyssey Across the Last Himalayan Kingdom*, and features 112 pages of spectacular images. The only problem is that this book measures about 2.1 metres by 1.5 metres and weighs 60kg – it is certified by Guinness World Records as the world's largest book. Each copy is individually printed on demand. I hate to disappoint you, but in these difficult economic times and in the absence of a new enlarged Resources Library, we will not be purchasing it this year.

However, there is a very good (and slightly cheaper) web site where you can find lots of relevant information about our latest community – at [www.bhutanese-refugees.com](http://www.bhutanese-refugees.com)

## End-of-year Picnic 2009

English Language Partners Nelson got together with the Nelson Multicultural Council for an end-of-year picnic at Fairfield House. About 100 people turned up and we managed to get in some great races (sack race, potato and spoon, and three-legged races to be precise) and a lovely variety of food before the rain started and we had to adjourn inside. The races certainly brought to light some previously unappreciated competitive instincts!



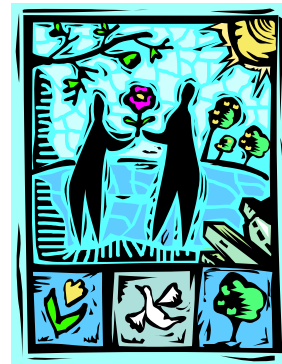
*Competitors eagerly await the start of the sack race.*



*Nari Thach and Eva Pick made an impressive team in the three-legged race.*

## Giving is living

Become a volunteer and improve your health! Most people find pleasure in giving, but now it has been proved to have measurable physical benefits. According to a recent *Listener* article (26 December 2009), studies of retired volunteers in the United States have indicated that they are calmer, happier, have higher self-esteem and are more content with their lives than non-volunteer retirees. Their health was better and they had more energy, fewer aches and pains and lower rates of heart disease. So your generosity in volunteering will benefit you too.



### INVITATION TO ALL TUTORS

**TOD PHAPAKATUNYU  
THAI NEW YEAR**

**SUNDAY 18 APRIL 2010  
9am – 3pm**

**Wat Buddha Samakhee Richmond Nelson  
377 Lower Queen Street, Richmond**

**Everyone is invited to support the temple and celebrate the Thai New Year. This festival is a very special time honouring older people and family, and those who have passed away. The ceremonies are intended to bring good things and a happy and successful life for all people.**



# What's New in the Resources Room?



## **Overdue resources – a reminder**

There are still lots of overdue resources out there. Remember that books are issued for 21 days and can be renewed if you contact the office or me directly. There are a lot of tutors waiting for specific titles, so please return books promptly when you have finished with them. Overdue resources can quickly become lost resources, so please keep track of where the items are, especially if you have left them with your learner. We operate on a very limited budget and sometimes cannot afford to replace lost items.

## **Recent purchases to look out for -**

### **PASSWORD MAGAZINE- Autumn 2010** **‘NEW THINGS’**

This excellent New Zealand produced magazine for New Speakers of English is issued quarterly, and each magazine has a different theme. The new issue is all about **new things** which will interest both you and your learner. Topics include the New Zealand Cycle Trail, beekeeping, Twitter and new technology for older people. There is a variety of articles, exercises and activities **to suit all levels of learner** from beginner to advanced. We are now holding 5 copies of each issue so that more learners can use it at the same time. There is a comprehensive index for you to choose a theme that interests your learner, as well as a book called ‘The Best of Password’.

Please record your Password loan in the Red Book as these items are not barcoded. You may also want to consider taking out your own subscription as it only costs \$15 a year for 4 issues.

**I highly recommend you give it a go!!**

### **PHOTO LIBRARY**

This new and exciting highly visual resource is hot on the shelves. Get in quick if you want to take it out!

The photo library with its 210 glossy, coloured Photo Cards and Teacher’s Ideas Book provides a wealth of motivating photographs and activity

suggestions for vocabulary and language development. Your learner will enjoy the beautiful photographs of themes which relate to everyday living. These include FOOD, CLOTHING, SCHOOL, RECREATION and TOYS.

This resource will be on display at our next Tutor’s lunch on Wednesday 31<sup>st</sup> March.

**See you there!**

## **www.englishlanguage.org.nz**

(our own website)

**This is a reminder for all tutors to look at the site from time to time for resources and to keep up to date with what’s happening at a national and regional level. It is constantly being updated and has a wealth of items that may be useful to you, from downloadable worksheets and resources, to a graphics bank of ‘seasonal scenes’.**

**To access the site,**

- **login and then**
- **tutor login and then**
- **type in the user name: esolht and then**
- **type in the password: communicate.**

**This will bring you to the tutors area.**

• **Select: Resources for tutors where you will find the graphics bank and lots of other teaching resources to choose from.**  
**GOOD LUCK!**

That’s all for now, so keep up the great work and pop in on a Wednesday between 10am and 3pm for help in selecting suitable resources for your learner. We have a great range of resources here to make your job easier.

Mary Kroch

Resources Coordinator

**Contact details**

**mary.kroch@englishlanguage.org.nz**

**or ring the office and leave a message 539 4848**

## Home Tutors website



[www.englishlanguage.org.nz](http://www.englishlanguage.org.nz)

Have you explored our national website yet? First of all, go into [www.englishlanguage.org.nz](http://www.englishlanguage.org.nz). You might like to have a look at the **Teach English** heading near the top of the screen on the home page. Then to get into the Tutors' area, you have to click on

- login near the top right hand corner of the screen, then on
  - Tutor login
  - type in username = ESOLHT and
  - password = communicate
- and with a bit of luck you will be in – there are tutor resources in there too (lots of useful worksheets), as well as a tutor bulletin board.

Give it a go!

## Try this website

Grace at our National Office has discovered an online resource called '**Log on and Learn**' for tutors/learners wanting to develop their computer skills. It starts with the basics of computer vocabulary and progresses to printing, writing and using the internet

<http://lvnj.org/content/log-and-learn>

## Can we email you??

Sometimes it would be useful and save time if we could contact you by email.



If you have an email address and are happy for us to contact you this way, could you please let us know at **nelson@englishlanguage.org.nz** or **esol@marlboroughonline.co.nz**

## Thanks to ....

As always, we couldn't do our job without the generous support of the following funders:

Tertiary Education Commission  
Canterbury Community Trust  
Community Organisations  
Grants Scheme  
Nelson City Council  
Lottery Grants Board  
Waimea College  
NZ Post  
Janus Trust



| Dates for your diary |          |               |
|----------------------|----------|---------------|
| Tutor lunch          | 12 – 1pm | Wed 31 Mar    |
| AGM                  | 7.30pm   | Tues 20 April |
| Tutor lunch          | 12 – 1pm | Wed 28 April  |
|                      |          |               |

English Language Partners Nelson  
PO Box 1623  
Nelson 7040